



Test Report



Report No.: PTC23072406705C-EN01

Issue Date: Jul. 29, 2023

Page1 of 10

Applicant: Silicone stars

Address: 297 Kingsbury Grade, Stateline, NV 89449, United States

The following merchandise was (were) submitted and identified by client as:

Sample Name: Tina kay doll

Model: Main test model: Tina kay doll

Series model: Tina kay doll

Trade Mark:



Manufacturer: Best Adult Toys (Dongguan) Co., LTD

Address: Building 602, No. 7, Lane 7, Hongshan District, Botou, Humen Town, Dongguan City, Guangdong Province

Sample Received Date: Jul. 25, 2023

Completed Date: Jul. 28, 2023

Test Requested: As specified by client, with reference to RoHS Directive 2011/65/EU and its subsequent amendments regulation EU No.2015/863.(Lead (Pb), Cadmium(Cd), Mercury(Hg), Hexavalent Chromium(Cr⁶⁺), PBBs and PBDEs, Phthalates (DBP, BBP,DEHP,DIBP))

Conclusion(s): According to the test results of below test parameters, the tested materials of submitted samples complied with the requirements for RoHS Directive 2011/65/EU and its subsequent amendments regulation EU No.2015/863.

Test Result(s) and Test Method(s):Please refer to next page(s).

Prepared by: Anne

Checked by:Crystal

Approved by: Miya



This report is issued according to the general clauses in www.ptc-testing.com by PTC. Responsibility, guarantee and law restriction are defined in the general service clauses. The report is only responsible for the submitted sample(s) except as otherwise noted. The report could not be copied without permission of the company.

Precise Testing & Certification (Guangdong) Co., Ltd. (PTC)

Building 1, No. 6, Tongxin Road, Dongcheng Street, Dongguan, Guangdong, China

Tel: 86-769-38808222

Fax: 86-769-38826111

[http:// www.ptc-testing.com](http://www.ptc-testing.com)



Test Report

Report No.: PTC23072406705C-EN01

Issue Date: Jul. 29, 2023

Page2 of 10

Test Result(s):

1.1) RoHS Directive 2011/65/EU -(Lead (Pb)/Cadmium(Cd)/Mercury(Hg)/Hexavalent Chromium(Cr⁶⁺)/PBBs/PBDEs)

Test Method: IEC62321-3-1: 2013, analyzed by EDXRF.

| No. | Materials Description | EDXRF Result(s) (mg/kg) | | | | | Chemical Result (mg/kg) | Conclusion |
|-----|---|----------------------------|----|----|----|----|----------------------------|------------|
| | | Pb | Cd | Hg | Cr | Br | | |
| 1 | Transparent TPE (whole) | BL | BL | BL | BL | BL | -- | PASS |
| 2 | Black plastic (button, switch) | BL | BL | BL | BL | BL | -- | PASS |
| 3 | Silver metal (panel, switch) | BL | BL | BL | BL | -- | -- | PASS |
| 4 | Silver metal (shrapnel, switch) | BL | BL | BL | BL | -- | -- | PASS |
| 5 | Silver metal (pin, switch) | BL | BL | BL | BL | -- | -- | PASS |
| 6 | Black plastic (base, switch) | BL | BL | BL | BL | BL | -- | PASS |
| 7 | Yellow plastic (LED, PCB "JX-08015") | BL | BL | BL | BL | BL | -- | PASS |
| 8 | Blue PCB (PCB "JX-08015") | BL | BL | BL | BL | BL | -- | PASS |
| 9 | Brown body (chip capacitor, PCB "JX-08015") | BL | BL | BL | BL | BL | -- | PASS |
| 10 | Black body (patch resistor, PCB "JX-08015") | BL | BL | BL | BL | BL | -- | PASS |
| 11 | White ceramic with black coating (patch resistor, PCB "JX-08015") | BL | BL | BL | BL | BL | -- | PASS |
| 12 | Black body (component "SL", PCB "JX-08015") | BL | BL | BL | BL | BL | -- | PASS |
| 13 | Black body (component "S4", PCB "JX-08015") | BL | BL | BL | BL | BL | -- | PASS |
| 14 | Black body (component "2300", PCB "JX-08015") | BL | BL | BL | BL | BL | -- | PASS |
| 15 | Black body (component "LTH7", PCB "JX-08015") | BL | BL | BL | BL | BL | -- | PASS |
| 16 | Black body (integrated circuit, PCB "JX-08015") | BL | BL | BL | BL | BL | -- | PASS |
| 17 | Silver metal (IC pin, PCB "JX-08015") | BL | BL | BL | BL | -- | -- | PASS |

This report is issued according to the general clauses in www.ptc-testing.com by PTC. Responsibility, guarantee and law restriction are defined in the general service clauses. The report is only responsible for the submitted sample(s) except as otherwise noted. The report could not be copied without permission of the company.

Precise Testing & Certification (Guangdong) Co., Ltd. (PTC)

Building 1, No. 6, Tongxin Road, Dongcheng Street, Dongguan, Guangdong, China

Tel: 86-769-38808222

Fax: 86-769-38826111

[http:// www.ptc-testing.com](http://www.ptc-testing.com)



Test Report

Report No.: PTC23072406705C-EN01

Issue Date: Jul. 29, 2023

Page3 of 10

| No. | Materials Description | EDXRF Result(s) (mg/kg) | | | | | Chemical Result (mg/kg) | Conclusion |
|-----|-----------------------------------|----------------------------|----|----|----|----|----------------------------|------------|
| | | Pb | Cd | Hg | Cr | Br | | |
| 18 | Silver solder (PCB "JX-08015") | BL | BL | BL | BL | -- | -- | PASS |

- Note:**
1. mg/kg = milligram per kilogram (ppm).
 2. The result are obtained by EDXRF for primary screening, if the result exceeds the below limit (BL), and further chemical testing.
 3. For EDXRF screening, the result(s) of Cr VI was (were) reported as total chromium and the result(s) of PBBs and PBDEs was (were) reported as total bromine.

Screening limits in mg/kg for regulated elements in various matrices

| Elements | Polymer | Metal | Composite Materials |
|----------|--|--|--|
| Pb | $BL \leq (700-3\sigma) < X < (1300+3\sigma) \leq OL$ | $BL \leq (700-3\sigma) < X < (1300+3\sigma) \leq OL$ | $BL \leq (500-3\sigma) < X < (1500+3\sigma) \leq OL$ |
| Cd | $BL \leq (70-3\sigma) < X < (130+3\sigma) \leq OL$ | $BL \leq (70-3\sigma) < X < (130+3\sigma) \leq OL$ | $LOD < X < (150+3\sigma) \leq OL$ |
| Hg | $BL \leq (700-3\sigma) < X < (1300+3\sigma) \leq OL$ | $BL \leq (700-3\sigma) < X < (1300+3\sigma) \leq OL$ | $BL \leq (500-3\sigma) < X < (1500+3\sigma) \leq OL$ |
| Cr | $BL \leq (700-3\sigma) < X$ | $BL \leq (700-3\sigma) < X$ | $BL \leq (500-3\sigma) < X$ |
| Br | $BL \leq (300-3\sigma) < X$ | -- | $BL \leq (250-3\sigma) < X$ |

BL = Below Limit, OL = Over Limit, IN = Inconclusive, LOD = Limit of Detection

This report is issued according to the general clauses in www.ptc-testing.com by PTC. Responsibility, guarantee and law restriction are defined in the general service clauses. The report is only responsible for the submitted sample(s) except as otherwise noted. The report could not be copied without permission of the company.

Precise Testing & Certification (Guangdong) Co., Ltd. (PTC)

Building 1, No. 6, Tongxin Road, Dongcheng Street, Dongguan, Guangdong, China

Tel: 86-769-38808222

Fax: 86-769-38826111

[http:// www.ptc-testing.com](http://www.ptc-testing.com)



Test Report

Report No.: PTC23072406705C-EN01

Issue Date: Jul. 29, 2023

Page4 of 10

Chemical Testing - Detection Limit & 2011/65/EU Limit:

| Name of Chemicals | Detection Limit (mg/kg) | 2011/65/EU Limit (mg/kg) |
|--|----------------------------------|------------------------------------|
| Lead (Pb) | 5 | 1000 |
| Cadmium (Cd) | 5 | 100 |
| Mercury (Hg) | 5 | 1000 |
| Chromium VI (Cr VI) | Non-metal: 10 Metal: Negative | Non-metal: 1000 Metal: Negative |
| Polybromobiphenyls (PBBs) -Bromobiphenyl (MonoBB) -Dibromobiphenyl (DiBB) -Tribromobiphenyl (TriBB) -Tetrabromobiphenyl (TetraBB) -Pentabromobiphenyl (PentaBB) -Hexabromobiphenyl (HexaBB) -Heptabromobiphenyl (HeptaBB) -Octabromobiphenyl (OctaBB) -Nonabromobiphenyl (NonaBB) -Decabromobiphenyl (DecaBB) | Each 5 | Sum: 1 000 |
| Polybromodiphenyl ethers (PBDEs) -Bromodiphenyl ether (MonoBDE) -Dibromodiphenyl ether (DiBDE) -Tribromodiphenyl ether (TriBDE) -Tetrabromodiphenyl ether (TetraBDE) -Pentabromodiphenyl ether (PentaBDE) -Hexabromodiphenyl ether (HexaBDE) -Heptabromodiphenyl ether (HeptaBDE) -Octabromodiphenyl ether (OctaBDE) -Nonabromodiphenyl ether (NonaBDE) -Decabromodiphenyl ether (DecaBDE) | Each 5 | Sum: 1 000 |

This report is issued according to the general clauses in www.ptc-testing.com by PTC. Responsibility, guarantee and law restriction are defined in the general service clauses. The report is only responsible for the submitted sample(s) except as otherwise noted. The report could not be copied without permission of the company.

Precise Testing & Certification (Guangdong) Co., Ltd. (PTC)

Building 1, No. 6, Tongxin Road, Dongcheng Street, Dongguan, Guangdong, China

Tel: 86-769-38808222

Fax: 86-769-38826111

[http:// www.ptc-testing.com](http://www.ptc-testing.com)



Test Report

Report No.: PTC23072406705C-EN01

Issue Date: Jul. 29, 2023

Page5 of 10

Test Result(s):

1.2) RoHS Directive 2011/65/EU and its subsequent amendments regulation EU No.2015/863 - (Phthalates DIBP,DBP, BBP, DEHP)

Method: IEC 62321-8: 2017, analyzed by Gas Chromatograph-Mass Spectrometry (GC-MS).

| Substances | DBP | BBP | DEHP | DIBP | Conclusion |
|------------------|----------------|---------|----------|---------|------------|
| CAS No. | 84-74-2 | 85-68-7 | 117-81-7 | 84-69-5 | |
| Limit(s) (mg/kg) | 1000 | 1000 | 1000 | 1000 | |
| RL (mg/kg) | 50 | 50 | 50 | 50 | |
| Material No. | Result (mg/kg) | | | | |
| 1+2 | N.D. | N.D. | N.D. | N.D. | PASS |
| 6+8 | N.D. | N.D. | N.D. | N.D. | PASS |
| 7+9+10 | N.D. | N.D. | N.D. | N.D. | PASS |
| 11+12+13 | N.D. | N.D. | N.D. | N.D. | PASS |
| 14+15+16 | N.D. | N.D. | N.D. | N.D. | PASS |

- Note:**
1. mg/kg = milligram per kilogram (ppm).
 2. N.D. = Not Detected (<RL).
 3. RL=Reporting Limit.

Test Material List

The following materials apply only to the samples submitted for phthalates testing.

| Material No. | Description (Location) |
|--------------|---|
| 1 | Transparent TPE (whole) |
| 2 | Black plastic (button, switch) |
| 6 | Black plastic (base, switch) |
| 7 | Yellow plastic (LED, PCB "JX-08015") |
| 8 | Blue PCB (PCB "JX-08015") |
| 9 | Brown body (chip capacitor, PCB "JX-08015") |
| 10 | Black body (patch resistor, PCB "JX-08015") |
| 11 | White ceramic with black coating (patch resistor, PCB "JX-08015") |
| 12 | Black body (component "SL", PCB "JX-08015") |
| 13 | Black body (component "S4", PCB "JX-08015") |
| 14 | Black body (component "2300", PCB "JX-08015") |
| 15 | Black body (component "LTH7", PCB "JX-08015") |
| 16 | Black body (integrated circuit, PCB "JX-08015") |

This report is issued according to the general clauses in www.ptc-testing.com by PTC. Responsibility, guarantee and law restriction are defined in the general service clauses. The report is only responsible for the submitted sample(s) except as otherwise noted. The report could not be copied without permission of the company.

Precise Testing & Certification (Guangdong) Co., Ltd. (PTC)

Building 1, No. 6, Tongxin Road, Dongcheng Street, Dongguan, Guangdong, China

Tel: 86-769-38808222

Fax: 86-769-38826111

[http:// www.ptc-testing.com](http://www.ptc-testing.com)



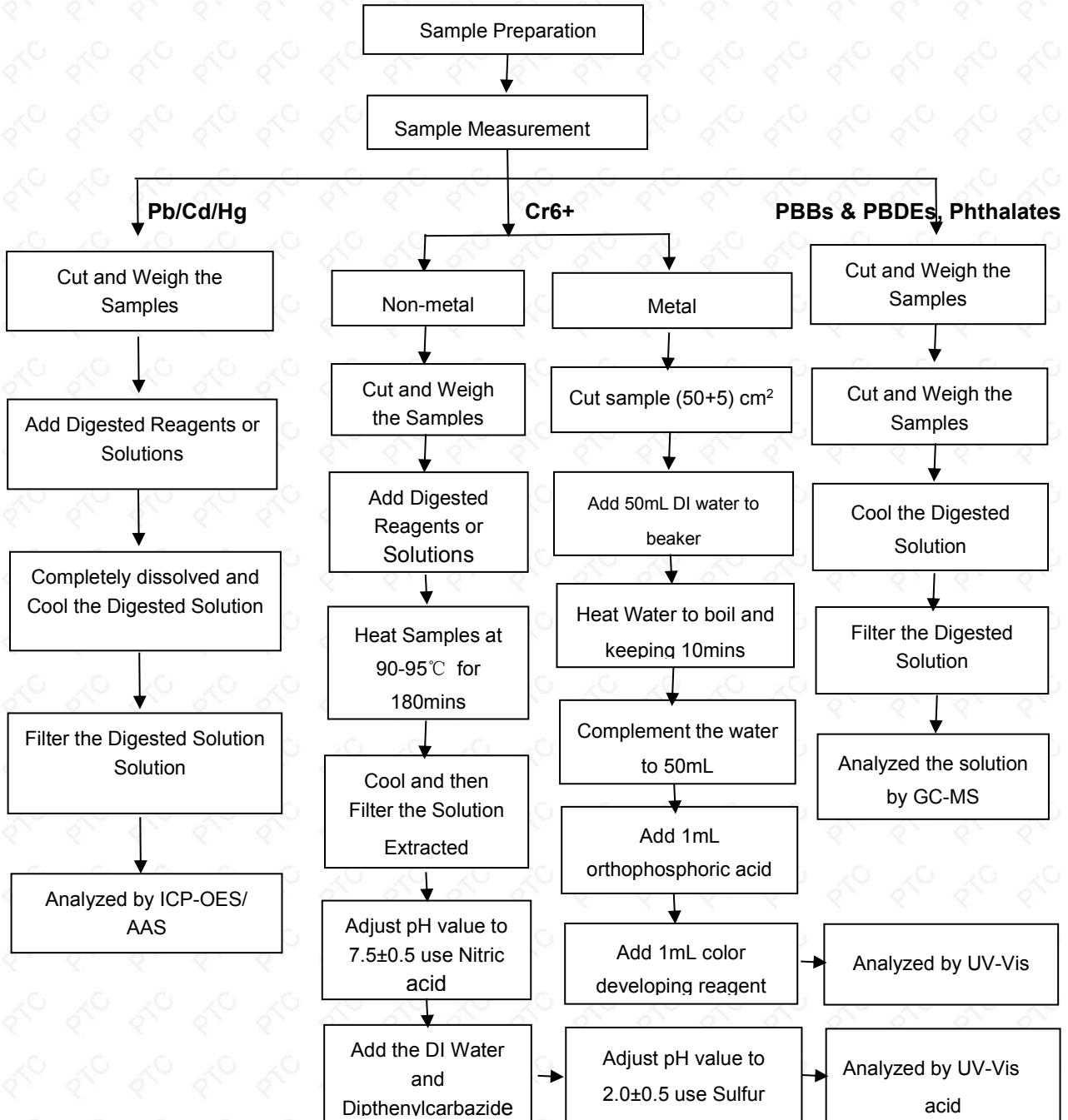
Test Report

Report No.: PTC23072406705C-EN01

Issue Date: Jul. 29, 2023

Page6 of 10

Pb/Cd/Hg/Cr6+/PBBs/PBDEs , Phthalates Testing Flow Chart



This report is issued according to the general clauses in www.ptc-testing.com by PTC. Responsibility, guarantee and law restriction are defined in the general service clauses. The report is only responsible for the submitted sample(s) except as otherwise noted. The report could not be copied without permission of the company.

Precise Testing & Certification (Guangdong) Co., Ltd. (PTC)

Building 1, No. 6, Tongxin Road, Dongcheng Street, Dongguan, Guangdong, China

Tel: 86-769-38808222

Fax: 86-769-38826111

[http:// www.ptc-testing.com](http://www.ptc-testing.com)



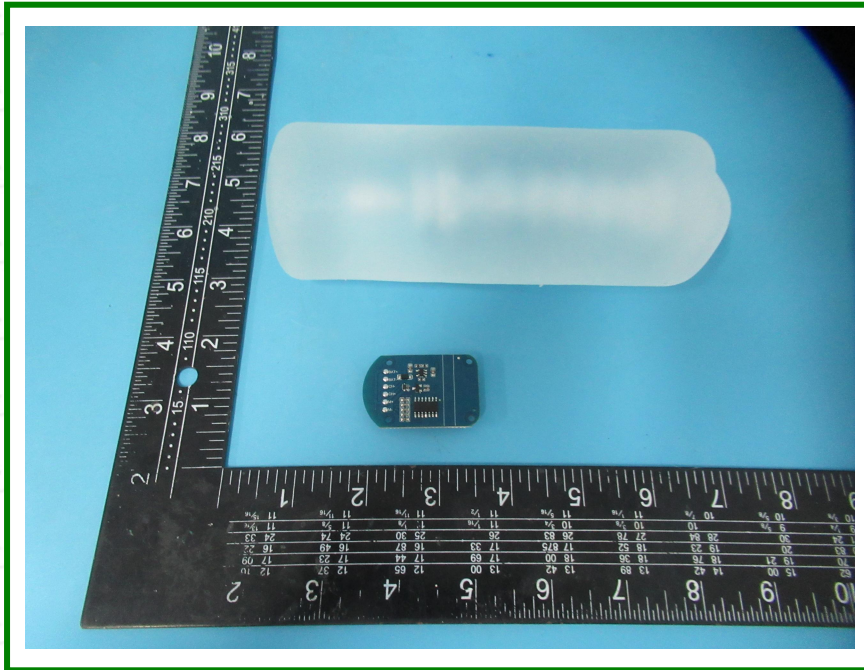
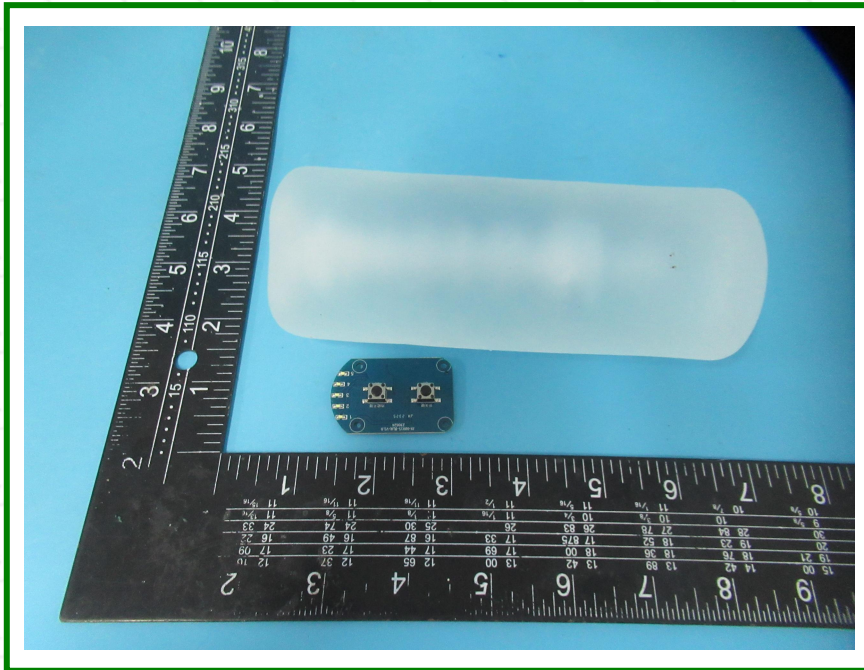
Test Report

Report No.: PTC23072406705C-EN01

Issue Date: Jul. 29, 2023

Page 7 of 10

Photo(s) of Sample:



This report is issued according to the general clauses in www.ptc-testing.com by PTC. Responsibility, guarantee and law restriction are defined in the general service clauses. The report is only responsible for the submitted sample(s) except as otherwise noted. The report could not be copied without permission of the company.

Precise Testing & Certification (Guangdong) Co., Ltd. (PTC)

Building 1, No. 6, Tongxin Road, Dongcheng Street, Dongguan, Guangdong, China

Tel: 86-769-38808222

Fax: 86-769-38826111

[http:// www.ptc-testing.com](http://www.ptc-testing.com)

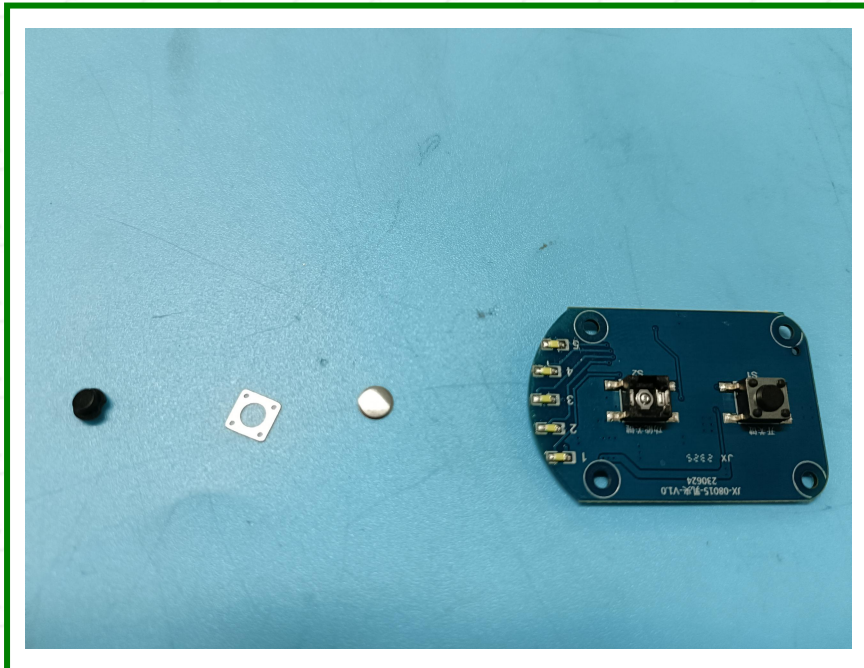
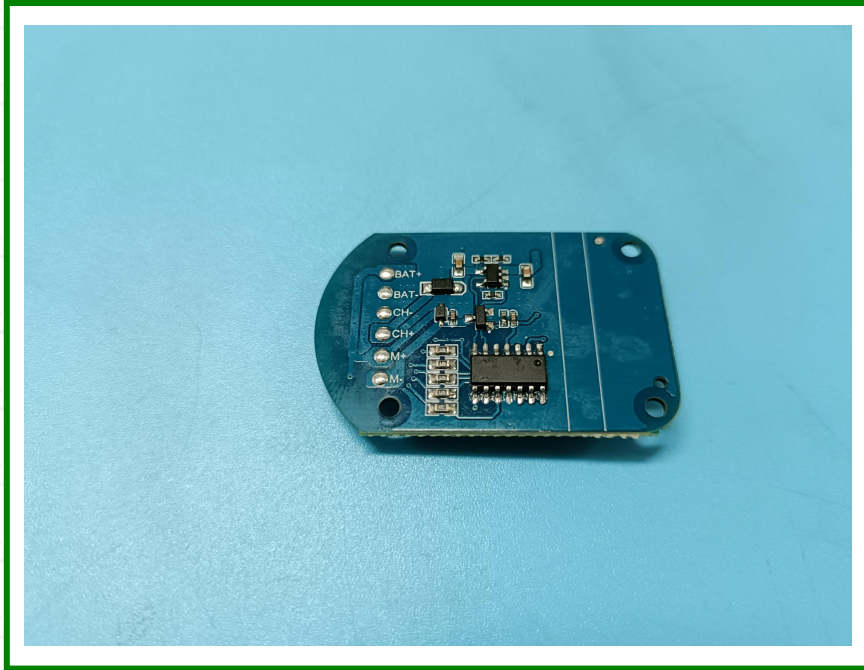


Test Report

Report No.: PTC23072406705C-EN01

Issue Date: Jul. 29, 2023

Page8 of 10



This report is issued according to the general clauses in www.ptc-testing.com by PTC. Responsibility, guarantee and law restriction are defined in the general service clauses. The report is only responsible for the submitted sample(s) except as otherwise noted. The report could not be copied without permission of the company.

Precise Testing & Certification (Guangdong) Co., Ltd. (PTC)

Building 1, No. 6, Tongxin Road, Dongcheng Street, Dongguan, Guangdong, China

Tel: 86-769-38808222

Fax: 86-769-38826111

[http:// www.ptc-testing.com](http://www.ptc-testing.com)



Test Report

Report No.: PTC23072406705C-EN01

Issue Date: Jul. 29, 2023

Page9 of 10



End of Report

This report is issued according to the general clauses in www.ptc-testing.com by PTC. Responsibility, guarantee and law restriction are defined in the general service clauses. The report is only responsible for the submitted sample(s) except as otherwise noted. The report could not be copied without permission of the company.

Precise Testing & Certification (Guangdong) Co., Ltd. (PTC)

Building 1, No. 6, Tongxin Road, Dongcheng Street, Dongguan, Guangdong, China

Tel: 86-769-38808222

Fax: 86-769-38826111

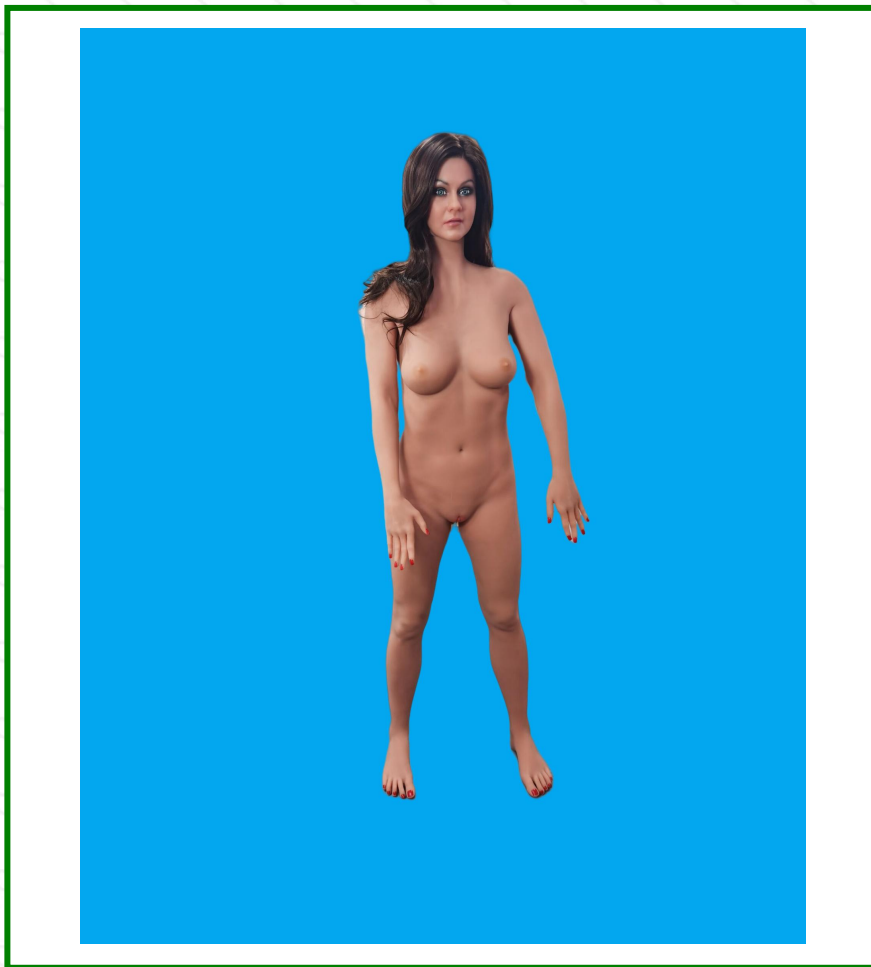
[http:// www.ptc-testing.com](http://www.ptc-testing.com)



Precise Testing & Certification (Guangdong) Co., Ltd. (PTC)

Description of the PTC23072406705C-EN01 test report

Photo(s) provided by the client:



This report is issued according to the general clauses in www.ptc-testing.com by PTC. Responsibility, guarantee and law restriction are defined in the general service clauses. The report is only responsible for the submitted sample(s) except as otherwise noted. The report could not be copied without permission of the company.

Precise Testing & Certification (Guangdong) Co., Ltd. (PTC)

Building 1, No. 6, Tongxin Road, Dongcheng Street, Dongguan, Guangdong, China

Tel: 86-769-38808222

Fax: 86-769-38826111

[http:// www.ptc-testing.com](http://www.ptc-testing.com)